

# Center Hole CYLINDERS RH SERIES

**10-100 Ton**  
Single-Acting,  
Spring-Return

Ideal for pulling and tensioning of cables, anchor bolts, forcing screws, etc.

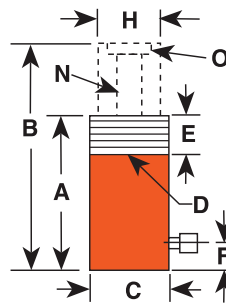
- Interchangeable piston head inserts provide versatility of application.
- 12, 20\*, 30\*, 50, 60 Ton Single-Acting Models Feature Threaded Collar
- Withstands full "dead-end" loads.
- Corrosion resistant standpipe has "Power Tech" treatment.
- All cylinders except RH120 are furnished with a 9796 3/8" NPT female half coupler.
- Aluminum cylinder body and piston are featured on the RHA306 cylinder.



**ASME B30.1  
700 bar**

\* Model RH203 and RHA306 do not feature the collar thread. See the chart below.

CYLINDERS



### HEAD INSERTS FOR RH SERIES CYLINDERS (OPTIONAL)

For Use With:	Threaded Insert Order No.
RH102, RH108	<b>28632</b> 3/4"-16
RH203	<b>28612</b> 1"-8
RH302, RH306	<b>38904</b> 1 1/4"-7
RH303	<b>28644</b> 1 1/4"-7
RH503	<b>38855</b> 1 5/8"-5 1/2
RH603, RH605 RH606	<b>34251</b> 1 5/8"-5 1/2

Cyl. Cap. (tons)	Stroke (mm)	Order No.	Oil Cap. (cm <sup>3</sup> )	A Re-tracted Height (mm)	B Ex-tended Height (mm)	C Outside Dia. (mm)	D Collar Thread (in.)	E Collar Thread Length (mm)	F Base to Port (mm)	H Piston Rod Dia. (mm)	N Center Hole Dia. (mm)	O Insert Thread and Size (in.)	Mounting Holes (in.) & Bolt Circle (mm)	Cylinder Effective Area (cm <sup>2</sup> )	Metric 700 bar	Tons at Weight (kg)
10	63,5	<b>RH102</b> †	91	134,9	198,4	76,2	-	-	25,4	52,4	19,4	1 3/4-12	3/4 - 20 x 60,3	14,3	10,0	4,1
10	203,2	<b>RH108</b> †	290	287,3	490,5	76,2	-	-	25,4	52,4	19,4	1 3/4-12	3/4 - 20 x 60,3	14,3	10,0	8,5
12	7,9	<b>RH120</b> **	14	55,6	63,5	69,9	2 3/4-16	31,8	9,5	34,9	17,5	3/4-16	5/16 - 18 x 50,8	17,8	12,5	1,4
12	41,3	<b>RH121</b>	74	122,2	163,5	69,9	2 3/4-16	31,8	25,4	34,9	20,2	-	-	17,8	12,5	3,0
12	41,3	<b>RH121T</b> **	74	122,2	163,5	69,9	2 3/4-16	31,8	25,4	34,9	17,5	3/4-16	-	17,8	12,5	3,0
12	76,2	<b>RH123</b>	136	184,2	260,4	69,9	2 3/4-16	20,6	25,4	34,9	20,6	-	-	17,8	12,5	4,0
20	50,8	<b>RH202</b>	155	155,6	206,4	98,4	3 7/8-12	38,1	25,4	54,0	27,4	1 9/16-16	3/8 - 16 x 82,5	30,4	21,4	7,3
20	76,2	<b>RH203</b> †	193	154,0	230,2	101,6	-	-	25,4	69,9	26,6	2 1/4-12	3/8 - 16 x 82,5	25,3	17,8	9,1
20	152,4	<b>RH206</b>	465	308,0	460,4	98,4	3 7/8-12	38,1	25,4	54,0	27,4	1 9/16-16	3/8 - 16 x 82,5	30,4	21,4	13,7
30	63,5	<b>RH302</b>	260	158,8	222,3	120,7	4 3/4-12	38,1	29,4	82,6	32,9	2 3/4-12	7/16 - 20 x 92,1	40,9	28,8	11,6
30	149,2	<b>RHA306</b> †	625	283,4	432,6	130,2	-	-	31,8	82,6	32,5	2 5/8-8	-	40,9	28,8	9,9
30	152,4	<b>RH306</b>	625	247,7	400,1	120,7	4 3/4-12	38,1	29,4	82,6	32,5	2 3/4-12	7/16 - 20 x 92,1	40,9	28,8	17,7
50	76,2	<b>RH503</b>	534	181,0	257,2	152,4	6-12	50,8	31,8	104,8	42,5	3 1/4-12	5/8 - 18 x 120,6	70,0	49,3	21,2
60	76,2	<b>RH603</b> *	607	235,0	311,2	158,8	6 1/4-12	63,5	25,4	91,3	54,0	3-12	1/2 - 13 x 130,2	79,4	55,9	27,2
60	152,4	<b>RH606</b> *	1.211	311,2	463,6	158,8	6 1/4-12	63,5	25,4	91,3	54,0	3-12	1/2 - 13 x 130,2	79,4	55,9	35,4
100	76,2	<b>RH1003</b> *†	1.014	254,0	330,2	212,7	-	-	31,8	127,0	79,4	4 1/8-12	-	133,0	93,5	52,2

\* Supplied with carrying handles.

Aluminum

\*\* RH120 and RH121T do not have an internal threaded insert, but do have a 3/4-16 internal thread. The RH120 inlet port is 1/4" NPTF.

† RH102, RH108, RH203, RHA306 & RH1003 with plain collar.

# Center Hole CYLINDERS RH SERIES

## 30-200 Ton Double-Acting

Ideal for pulling and tensioning.

CYLINDERS

- Interchangeable piston head inserts provide versatility of application (See page 18).
- Built-in safety feature prevents over-pressurization of the retract circuit.
- Plated piston rod resists wear; superior packings provide high cycle life without leakage.
- Corrosion-resistant standpipe has "Power Tech" treatment (See page 6).
- Each cylinder has 9796 3/8" NPTF female half couplers. The 60 ton thru 200 ton models are equipped with removable carrying handles.

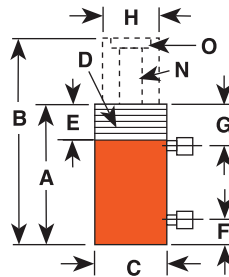


30, 60, 100, 150, 200 Ton  
Double-Acting Models  
Feature Plain Collar

ASME B30.1  
700 bar



30, 60, 100 Ton  
Double-Acting Models Feature  
Threaded Collar



Cyl. Cap. (tons)	Stroke (mm)	Order No.	Oil Cap. (cm <sup>3</sup> )		A	B	C	D	E	F	G	H	N	O	Mounting Holes (in.) and Bolt Circle (mm)	Cylinder Effective Area (cm <sup>2</sup> )		Metric Tons at 700 bar		Weight (kg)		
			Push	Pull												Push	Pull	Push	Pull			
30	15	76,2	RH303	289	167	179,4	255,6	120,7	-	-	25,4	41,3	63,5	32,5	2-12	3/4-16 x 92,1	38,0	21,8	26,8	15,3	13,5	
30	15	152,4	RH306D	580	333	281,0	433,4	120,7	-	-	25,4	41,3	63,5	32,5	2-12	7/16-20 x 92,1	38,0	21,8	26,8	15,3	20,4	
30	20	257,2	RH3010	1.082	672	438,2	695,3	114,3	4	1/2-12	41	44,5	81,0	60,3	33,3	1 7/8-16	-	42,2	26,1	29,7	18,3	27,7
60	25	101,6	RHA604D	807	338	241,3	342,9	177,8	-	-	39,7	57,2	101,6	54,0	3-12	1/2-13 x 130,2	79,4	33,2	55,8	25,1	16,2	
60	25	127,0	RH605*	1.009	423	241,3	368,3	165,9	-	-	25,4	44,5	101,6	54,0	3-12	1/2-13 x 130,2	79,4	33,2	55,8	25,1	33,1	
60	40	257,2	RH6010*	2.181	1.427	458,8	716,0	158,8	6	1/4-12	47,6	54,0	81,8	92,1	54,4	3-16	-	84,8	55,4	59,6	38,9	54,5
100	45	38,1	RH1001*	526	233	165,1	203,2	212,7	-	-	31,8	58,7	127,0	79,8	4-16	5/8-11 x 177,8	138,0	60,8	97,0	42,7	38,6	
100	50	152,4	RH1006*	1.971	1.076	314,3	466,7	184,2	-	-	37,3	59,1	111,1	52,4	-	1/2-13 x 139,7	129,2	70,5	90,8	49,6	43,1	
100	45	257,2	RH10010*	3.552	1.556	495,3	752,5	215,9	8	1/2-12	57	63,5	91,7	139,7	79,8	4 1/2-12	-	138,0	60,8	97,0	42,7	109,0
150	70	127,0	RH1505*	2.475	1.207	311,2**	438,2	215,9	-	-	37,3	68,3	139,7	65,1	-	-	194,1	94,8	136,9	66,8	67,2	
150	75	203,2	RH1508*	3.929	2.086	349,3	552,5	247,7	-	-	39,3	61,1	152,4	80,2	5-12	-	193,2	102,6	135,9	72,1	103,1	
200	75	203,2	RH2008*	5.307	2.093	408,0	611,2	273,1	-	-	57,2	81,8	190,5	103,2	6-12	1/4-12 x 198,1	260,9	102,9	183,5	72,4	142,0	

\* Supplied with carrying handles.

\*\* Measured with 19 mm high serrated insert installed.

Aluminum