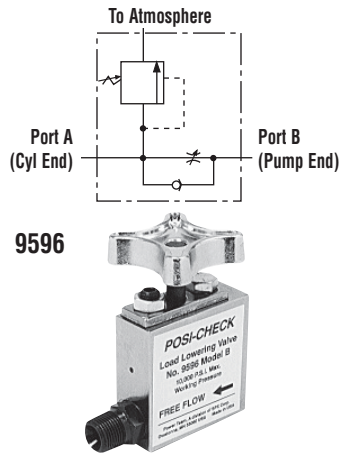


Valves

HYDRAULIC IN-LINE

700 bar, 19 l / min
max flow rate

HYDRAULIC ACCESSORIES



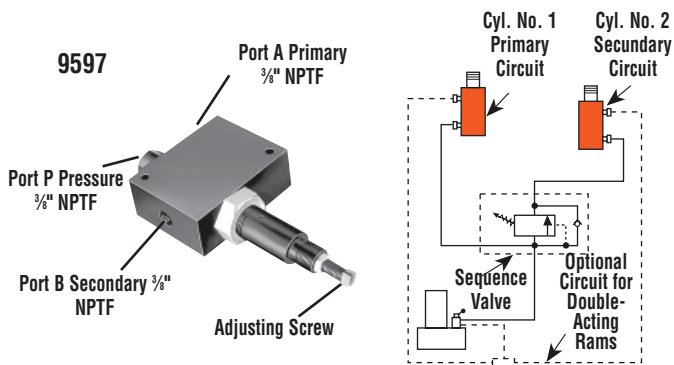
LOAD LOWERING VALVE (SAFETY CHECK VALVE)

Application: Precision metering for controlled cylinder piston return. For single-acting or double-acting cylinder.

Operation: Permits free flow when extending cylinder, built-in pressure relief and "Posi-Check®" locks and holds load in raised position until operator opens valve. May be pre-set to provide consistent metered return, or operator may select rate of return with each actuation. Has 3/8" NPTF ports.

NOTE: Pressure relief valve setting is 830 bar. Operating pressure is 700 bar and max. flow rate is 19 l /min.

No. 9596 – Load lowering valve. Wt., 1 kg.

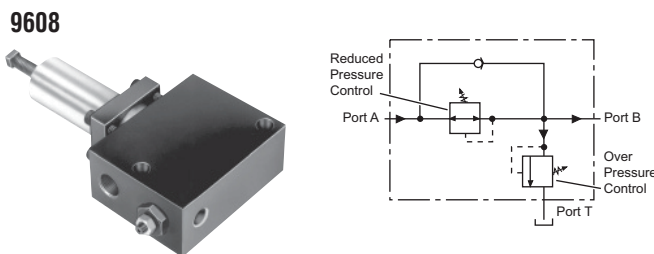


SEQUENCE VALVE

Application: Used when one cylinder in a multi-cylinder application must advance before any other.

Operation: Pump is connected to port "P" and separate cylinders to ports "A" and "B". When pressure is applied to port "P", cylinder "A" advances. Cylinder "B" will not advance until a predetermined pressure setting is reached in cylinder "A". Pressure setting is adjustable from 35 to 550 bar with adjustment screw; factory preset at 70 bar. Has 3/8" NPTF ports.

No. 9597 – Pressure control sequencing valve. Wt., 2,5 kg.

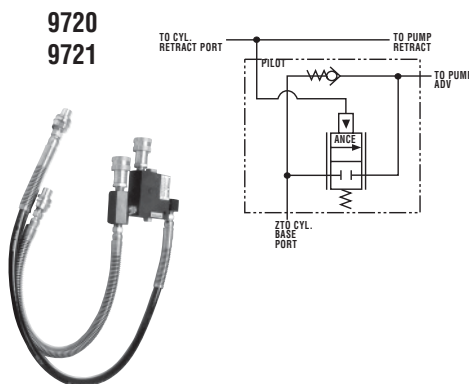


PRESSURE REDUCING VALVE

Application: Provides complete, independent pressure control to two or more clamping systems operated by a single power source.

Operation: Can be used to provide different pressures in various stages of a single system. Virtually zero leakage across valve means each system can be operated by a single continuous pressure source. Adjustable from 70 to 350 bar at outlet port "B" (secondary). Has 1/4" NPTF ports.

No. 9608 – Pressure reducing valve. Wt., 2,6 kg.



COUNTER BALANCE VALVE

Application: Double-acting cylinders. Provides positive holding and controlled, "chatter-free" lowering of a load.

Operation: Load is raised at flow rate of pump, and held when pump is shut off. When the pump is shifted to "retract", the counter balance valve will continue to hold the load until system pressure exceeds pressure caused by load. The load can then be lowered smoothly

to the flow rate of the pump. The counter balance valve is designed to operate with pumps having a high pressure flow rate of up to 1,9 l /min. and cylinder ratios of 3 to 1.

No. 9720 – Counter balance valve, including two male and two female half two hydraulic hoses, fittings and dust caps. Wt., 4,5 kg.

No. 9721 – Same as 9720, but does not include couplers, hoses, fittings and dust caps. Wt., 4,2 kg.

CAUTION: The 9720 patented counter balance valve has a pilot pressure as high as 210 bar. Because this pressure is applied to the rod end of the cylinder while it is already under load, the system should not be sized for loads greater than 80% of cylinder rated capacity.

CAUTION: To prevent sudden, uncontrolled descent of a load as it is being lowered, use a No. 9596 Load Lowering Valve or No. 9720 Counter Balance Valve in conjunction with the directional valve used in your application. See above, this page.

Shut-off valve

Application: This needle valve permits fine metering of hydraulic oil.
Operation: Can be used for controlling multiple single-acting cylinders.
No. 9575 – Shut off valve with 3/8" NPTF ports. Wt., 0,6 kg.



9575

Check valve

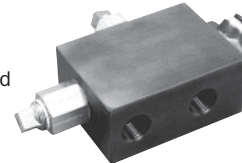
Application: Permits flow of hydraulic oil in one direction only.
Operation: Installs right in hydraulic line.
No. 9580 – Check valve with 3/8" NPTF male ends. Wt., 0,2 kg.



9580

Pilot operated check valve

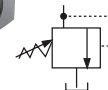
Application: For use with open or tandem center valves. Permits free flow of fluid in one direction.
Operation: Flow is blocked in opposite direction until pilot oil pressure is applied. This prevents the loss of pressure if the valve is inadvertently shifted or the pump line is broken.
 Minimum cracking pressure is 4,1 bar. Required pilot pressure is approximately 16% of checked system pressure.
No. 9581 – Pilot operated check valve with 3/8" NPTF ports. Wt., 1,7 kg.



9581

"In-line" pressure relief valve

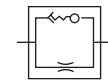
Application: Single- or double-acting cylinders. For remote locations in a hydraulic circuit where maximum pressure requirements are less than basic overload valve setting in pump.
Operation: Adjustable from 70 to 700 bar. Valve is spring-loaded and direct-acting.
No. 9623 – Pressure relief valve with 3/8" NPTF ports. Wt., 0,9 kg.



9623

Metering valve

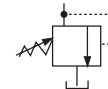
Application: For systems using large cylinders or extended lengths of hydraulic hose.
Operation: Controls surges by restricting flow if it exceeds 26,5 l / min. When flow subsides, valve reopens automatically. Has 3/8" NPTF male end to thread into return port of system control valve, and a 3/8" NPTF female end, permitting return hose to be directly connected.
No. 9631 – Metering valve. Wt., 0.1 kg.



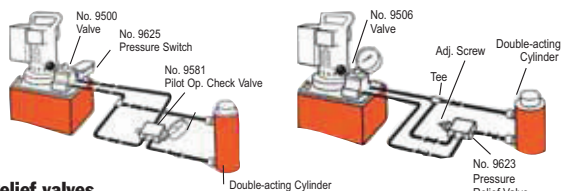
9631

"In-line" pressure regulator valve

Application: Single- or double-acting cylinders. Permits adjusting operating pressures at various values below relief valve setting of pump.
Operation: Regulator valve is easily adjusted to maintain pressures between 20 and 700 bar. Maintains a given pressure setting within 3% over repeated cycles. Flow range is 0,3 l / min to 23 l / min.
No. 9633 – In-line pressure regulator valve with two 3/8" NPTF inlet ports, one 1/8" NPTF tank port and 1 m drain line kit. Wt., 0,9 kg.
Simply turn the handle clockwise to increase the pressure setting, counter-clockwise to reduce pressure.
Note: 1 m Drain Line Kit is included.

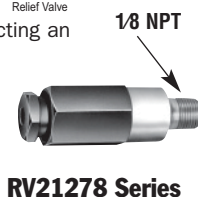


9633



Relief valves

Application: Provide an economical means of protecting a hydraulic circuit against over pressurization.
Operation: These factory preset valves are designed for maximum flow rate of 19 l / min. Furnished with 1/8" NPTF male port. All valves weigh 0.1 kg. See chart to the right for ordering information.



Valve Order No.	Pressure Setting (bar)	Valve Order No.	Pressure Setting (bar)
RV21278	697/738	RV21278-52	366/407
RV21278-6	41/44	RV21278-55	386/428
RV21278-10	62/69	RV21278-57	400/442
RV21278-15	103/117	RV21278-60	421/462
RV21278-20	131/152	RV21278-65	455/497
RV21278-28	186/207	RV21278-70	490/531
RV21278-30	207/235	RV21278-75	524/566
RV21278-32	214/228	RV21278-80	559/600
RV21278-35	241/262	RV21278-83	580/621
RV21278-40	283/310	RV21278-86	600/642
RV21278-43	304/331	RV21278-88	614/662
RV21278-48	338/366	RV21278-90	628/669
RV21278-50	352/393		

Preset — Non-Serviceable

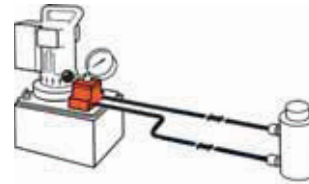
NOTE: Care should be exercised to protect workers from hot, pressurized hydraulic oil. Install these valves only in an enclosed or shielded area.

Valves

SELECTION INFORMATION

Pump Mounted Valves

700 bar



PUMP MOUNTED VALVES

Order No.	Page No.	*Cylinder Application	Operation	Valve Type	Volt	Advance/Return	Advance/ Hold Return	Posi-Check® Feature
9500	33	S.A. & D.A.	Manual	4-way, 3 Pos. Tandem Center	—	no	yes	no
9501	33	S.A. & D.A.	Manual	4-way, 3 Pos. Closed Center	—	no	yes	no
9502	32	S.A.	Manual	3-way, 3 Pos. Closed Ctr.	—	no	yes	yes
9504	CF	S.A. & D.A.	Manual	3/4-way, 2 Pos.	—	yes	yes	no
9506	33	D.A.	Manual	4-way, 3 Pos. Tandem Center	—	no	yes	yes
9507	33	D.A.	Manual	4-way, 3 Pos. Closed Center	—	no	yes	yes
9511	CF	S.A. & D.A.	Manual	4-way, 3 Pos. Open Center	—	yes	yes	no
9512	35	D.A.	Solenoid	4-way, 3 Pos. Tandem Center	24	no	yes	yes
9513	35	D.A.	Solenoid	4-way, 3 Pos. Tandem Center	115	no	yes	yes
9516	35	D.A.	Solenoid	4-way, 3 Pos. Tandem Center	12DC	no	yes	yes
9517	32	S.A.	Manual	2-way, 2 Pos.	—	no	yes	no
9519	35	D.A.	Solenoid	4-way, 3 Pos. Tandem Center	230	no	yes	yes
9520	32	S.A.	Manual	4-way, 3 Pos. Tandem Center	—	no	yes	yes
9522	CF	D.A.	Solenoid	4-way, 3 Pos. Open Center	230	yes	no	no
9523	CF	S.A.	Pilot Operated Solenoid	3-way, 2 Pos.	230	yes	no	no
9552	34	S.A. & D.A.	Solenoid	3/4-way, 2 Pos.	230	yes	no	no
9553	CF	S.A.	Pilot Operated Solenoid	3-way, 2 Pos.	24	yes	no	no
9569	34	S.A.	Solenoid	3-way, 2 Pos.	24	no	yes	no
9570	34	S.A.	Solenoid	3-way, 2 Pos.	230	no	yes	no
9572	34	S.A. & D.A.	Solenoid	3/4-way, 2 Pos.	24	yes	no	no
9576	CF	S.A.	Manual	3-way, 3 Pos. Metering Tandem Ctr.	—	no	yes	no
9579	34	S.A.	Solenoid	3-way, 2 Pos.	115	no	yes	no
9582	32	S.A.	Manual	3-way, 2 Pos.	—	no	yes	no
9584	32	S.A.	Manual	3-way, 2 Pos.	—	no	yes	no
9589	CF	S.A.	Pilot Operated Solenoid	3-way, 2 Pos.	115	yes	no	no
9590	CF	D.A.	Solenoid	4-way, 3 Pos. Open Center	115	yes	no	no
9592	34	S.A. & D.A.	Solenoid	3/4-way, 2 Pos.	115	yes	no	no
9594	34	S.A. & D.A.	Air	3/4-way, 2 Pos.	—	no	yes	yes
9599	35	S.A.	Pilot Operated Solenoid	3-way, 3 Pos. Tandem Center	24	no	yes	yes
9605	CF	S.A.	Pilot Operated Solenoid	3-way, 3 Pos. Tandem Center	115	no	yes	yes
9609	CF	S.A.	Manual	3-way, 3 Pos. Tandem Center	—	no	yes	no
9610	CF	S.A.	Auto Pilot Operated	3-way, 2 Pos.	—	yes	no	no
9610A	CF	S.A.	Manual	2/3-way, 2 Pos.	—	no	yes	no
9615	CF	D.A.	Solenoid	4-way, 3 Pos. Open Center	24	yes	no	no
9628	CF	S.A. & D.A.	Manual	Post Tensioning	—	special	no	no
9632	CF	S.A. & D.A.	Manual	Post Tensioning	—	special	no	no

* "S.A." represents single-acting cylinders, "D.A." represents double-acting cylinders
CF: Consult Factory

**Remote Mounted Valves
Available: Consult Factory**